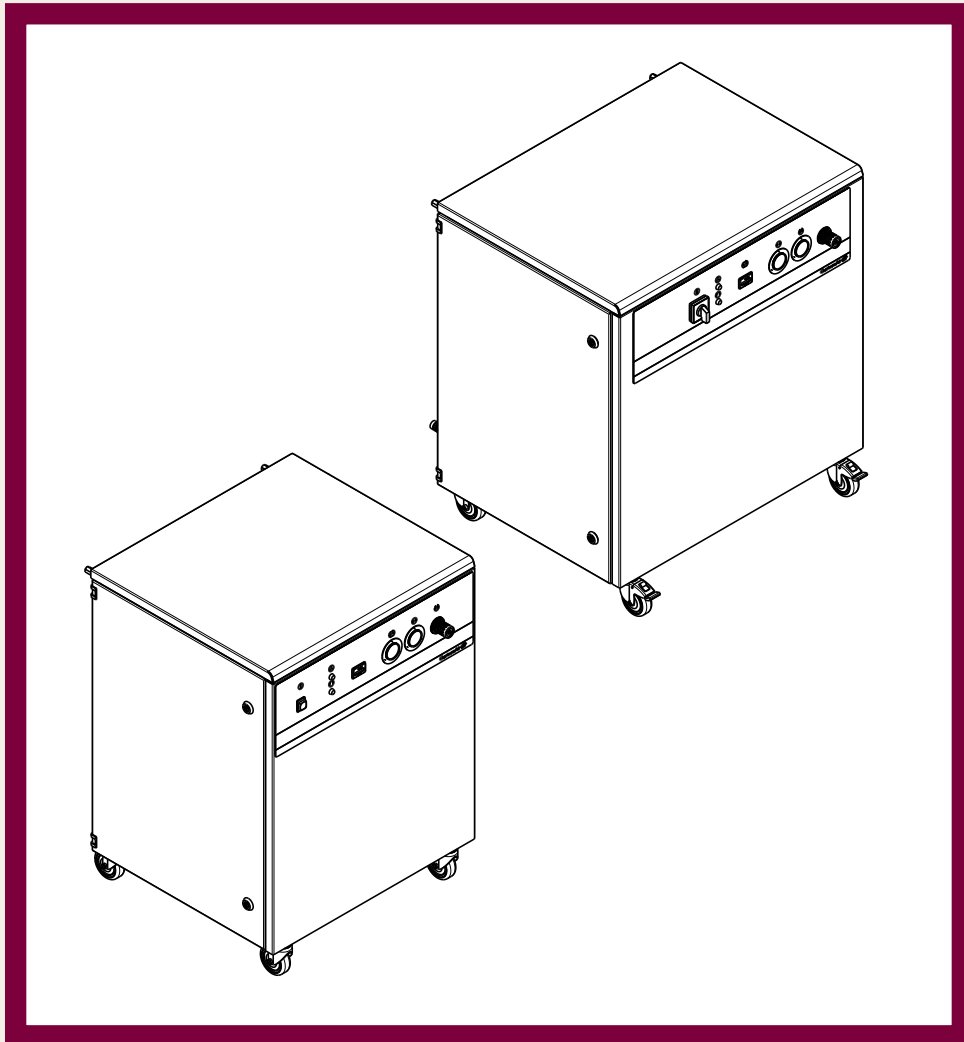




# Super Quiet LubeFree Compressors

## 900 Series



**Installation, Operation and Care Manual**

## **Low voltage box**

The low voltage relay box also called the control box is already installed on this compressor. The purpose of the control box is for the end use to install all remotely Master Control Panel (24 Volt operated) that can control the air from one location. By means of ONE switch the compressor can be turned off in the dental office instead of going to the utility room. By having the control box/low voltage relay installed on the compressor, you have all that is required for any future additions.

## Section I Introduction

Specifications.....	3
Model CA-913D / CA-923D / CA-925.....	4
Model CA-925D / CA-927D / CA-929D.....	5

## Section II Pre-installation

Unpacking.....	6
Placement.....	6

## Section III Installation

Unit Connections.....	7
Grounding Instructions.....	8
Extension Cords.....	9

## Section IV Operation

General Operation.....	10-11
Cabinet Doors.....	11
Pressure Switch.....	11

## Section V Care

Maintenance Schedule.....	12
Cleaning Compressor.....	12
Inspecting Dryer.....	13
Checking for Leaks.....	13
Testing Safety Valves.....	14
Replacing Intake Filter.....	14
Replacing Dryer Filters.....	15
Cleaning Non-return Valve.....	15

## Section VI User Service Information

Service Instruction.....	16
Troubleshooting Chart.....	17

## Section VII Parts List / Diagrams

Model CA-913 / CA-923 Parts List.....	18
Model CA-913 / CA-923 Diagram.....	19
Model CA-925 Parts List.....	20
Model CA-925 Diagram.....	21
Model CA-925D Parts List.....	22
Model CA-925D Diagram.....	23
Model CA-927D Parts List.....	24
Model CA-927D Diagram.....	25
Model CA-929D Parts List.....	26
Model CA-929D Diagram.....	27

## Product Support Services ..... 28



## Section I Introduction



This manual contains installation, operation and care instructions and user service information for the CustomAir® 900 Series Compressors.

The lube-free 900 Series Compressors are designed to provide trouble-free service when installed, operated and cared for according to the procedures set forth in this manual.

### Specifications

**NOTE:** *The dimensions for each model are illustrated on Pages 3 through 5.*

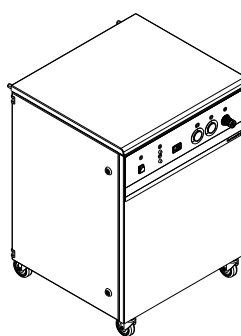
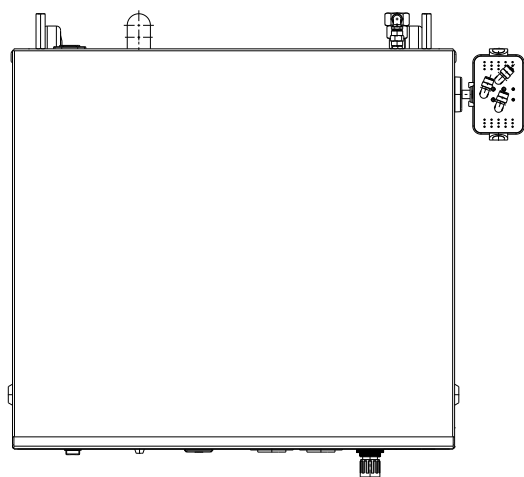
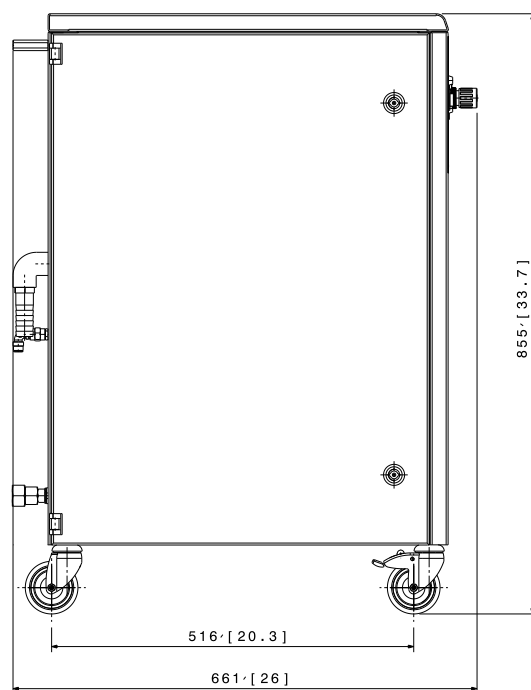
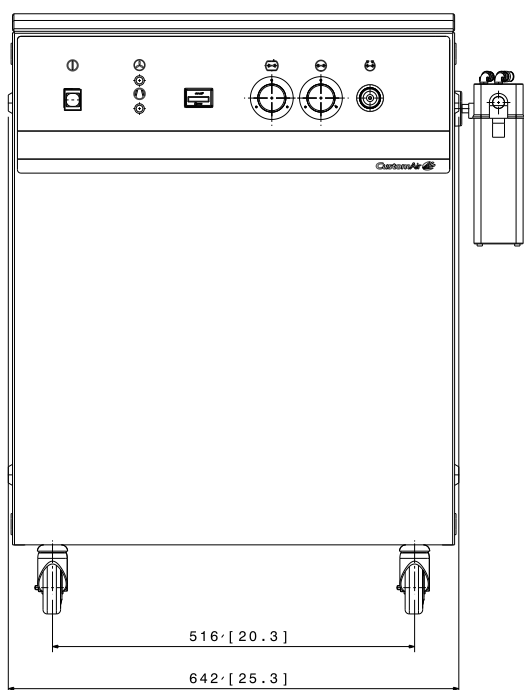
**NOTE:** *The pressure dew point for all 900 series units is -40° C/-40°F.*

Model	CA-913D	CA-923D	CA-925
Users (max.)	3	3	5
Voltage (V/Hz)	120/60	230/60	230/60
Power (amps.)	15.0	8.2	8.3
Weight: (kg.) (lbs.)	112 247	112 247	118 260
Dimensions: (mm) L×W×H (in.)	665x638x861 26.18x25.11x33.89	665x638x861 26.18x25.11x33.89	665x638x861 26.18x25.11x33.89
Noise level (db)	50	50	53
Pump Time (sec.) 0-120 psi	220	220	160

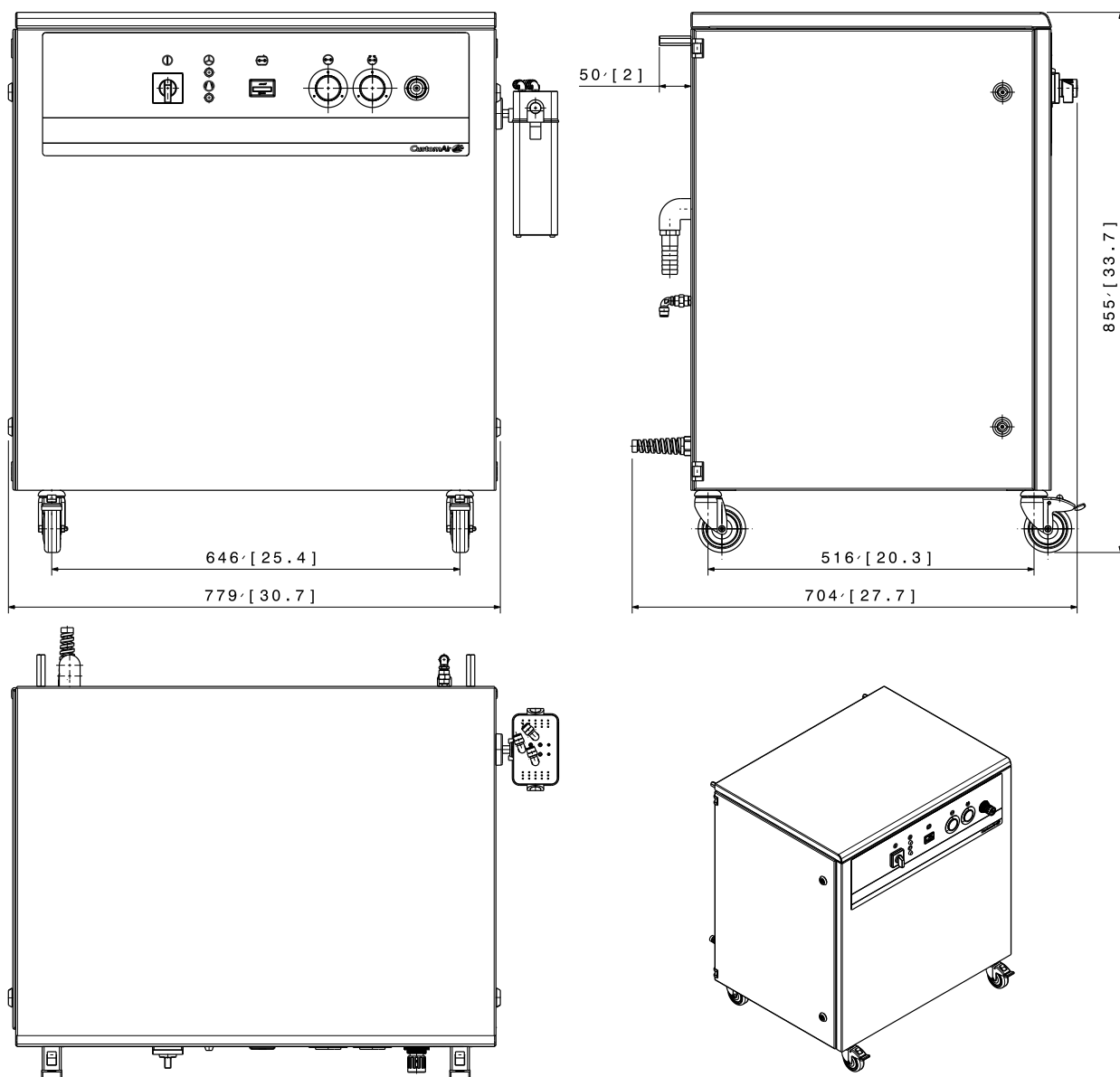
Model	CA-925D	CA-927D	CA-929D
Users (max.)	5	7	9
Voltage (V/Hz)	230/60	230/60	230/60
Power (amps.)	10.8	13.4	16.2
Weight: (kg.) (lbs.)	134 294	154 340	160 353
Dimensions: (mm) L×W×H (in.)	693x810x861 27.28x31.88x33.89	693x810x861 27.28x31.88x33.89	693x810x861 27.28x31.88x33.89
Noise level (db)	53	55	55
Pump Time (sec.) 0-120 psi	160	105	80

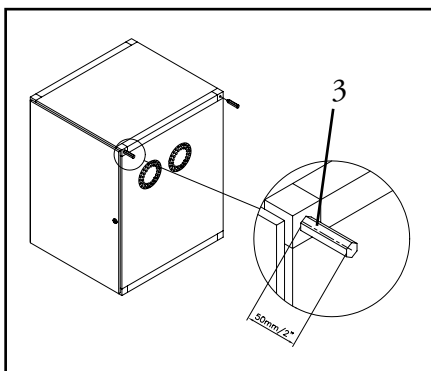
**NOTE:** Pump Time plus/minus 10%. Average at 20°C/68°F motor start temperature

## Model CA-913D / CA-923D / CA-925



## Model CA-925D / CA-927D / CA-929D





### Unpacking

1. Carefully remove the compressor from its shipping carton.
2. Visually inspect the unit for shipping damage. Contact the freight carrier and supplier immediately if the unit has shipping damage. (See *Product Support Services*, Page 28.)

### Placement

1. Place the compressor in a dust-free, dry, cool and frost-free room.

#### — CAUTION —

The compressor is for **indoor use only** --  
**NOT FOR OUTDOOR USE!**

2. **Do not** install the compressor against a wall because doing so would prevent the fans from functioning properly.

#### — WARNING —

When spraying flammable liquid, there may be **danger of fire or explosion**, especially in closed rooms.

3. Install two spacer bolts on the back of the compressor cabinet to maintain a minimum distance from the wall. This will help ensure proper ventilation.

#### — WARNING —

Place the compressor out of children's reach and **never leave children unattended** when the compressor is in use.

#### — NOTICE —

When using the compressor in connection with vital equipment, an alternative air source should be available in case of a defect in the compressor.



### Unit Connections

The following information will assist in making a quick, easy and quality installation. However, if there are any questions, contact a CustomAir technical service representative at 1-866-DTE-INFO (1-866-383-4636).

#### — WARNING —

Unless directions are followed and the original spare parts used, physical injury or property damage may result.

1. Mount the drain bottle visibly outside the metal cabinet.
2. Connect the tube from the drain bottle to the “drain” location in the back of the cabinet.

#### — CAUTION —

Only connect the compressor to installations with the correct voltage stated on the motor plate

3. Make sure the operating voltage of the compressor corresponds to the voltage of the socket. (*Refer to Specifications, Page 3.*)
4. Connect the supply cable to the back of the cabinet.

**NOTE:** Models CA-925D, CA-927D and CA-929D are mounted with permanent cable.

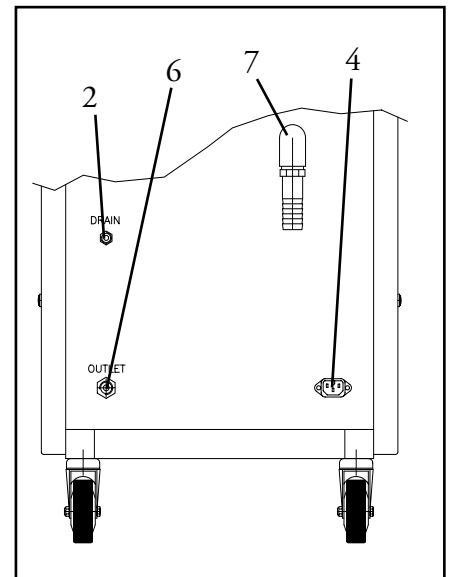
#### — CAUTION —

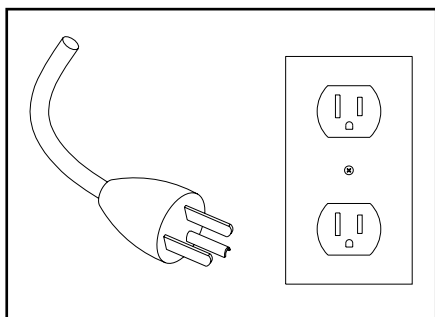
Only connect equipment suitable for the maximum pressure stated on the tank pressure gauge.

5. Connect the plug and cable and make sure the circuit is properly protected. (*See Grounding Instructions, Page 8.*)

**IMPORTANT NOTE:** *The air consumption of the equipment used with the compressor must be sized properly to the compressor/ number of users.*

6. Connect the equipment to the “outlet” location in the back of the cabinet.
7. Connect, the external air intake on the connecting piece on the intake.





## Grounding Instructions

### — WARNING —

Risk of electric shock could occur as a result of improper grounding plug installation.

To reduce the risk of electric shock, this product **must** be grounded. In the event of an electrical short circuit, grounding provides an escape wire for the electric current.

This product is equipped with a cord having a grounding wire with an appropriate grounding plug. *The wire with insulation having a green or green with yellow stripes outer surface is the grounding wire.*

1. The plug **must** be plugged into a properly installed and grounded outlet, which is in accordance with all local codes and ordinances.
2. If the plug provided does not fit the outlet, **do not** modify it in any way. Have a qualified electrician install the proper outlet.
3. If repair or replacement of the cord or plug is necessary, **do not** connect the grounding wire to either flat blade terminal.
4. Check with a qualified electrician or serviceman if the grounding instructions are not completely understood, or if there is any doubt whether the product is properly grounded.

### For Grounded, Cord-Connected Products:

- **Rated less than 15 amps and intended for use on a nominal 120V supply circuit:**
  - a. This product has a grounding plug like the one depicted in the illustration on the left.
  - b. Make sure the product is connected to an outlet having the same configuration as the plug and no adapter should be used.
- **Intended for use on a circuit having a nominal rating of more than 120V:**
  - a. This product is factory-equipped with a specific electric cord and plug, which allows connection to a proper electric circuit.
  - b. If reconnecting on a different type of electric circuit, reconnection should be made by qualified service personnel.
  - c. Make sure the product is connected to an outlet having the same configuration as the plug and no adapter should be used.

### Extension Cords (120V Units)

The use of an extension cord is **not advisable**. But if one must be used, it should meet the following recommendations:

- ✓ Use only a 3-wire extension cord having a 3-blade grounding plug and a 3-slot receptacle that will accept the plug on the product.
- ✓ Use an extension cord that is in good condition and heavy enough to carry the current the product will draw.
- ✓ For lengths less than 25 feet, No. 14 AWG extension cords should be used.

#### — CAUTION —

An undersized extension cord will cause a drop in line voltage and loss of power and overheating will result.

- ✓ If in doubt, use the next heavier gauge. *The smaller the gauge number - the heavier the cord.*

### General Operation

The oil-less 900 Series Compressor is very easy to operate and maintain. Observe the following simple operating instructions and the compressor will provide clean, high-quality air.

#### — WARNING —

Do not direct any air flow towards the body.

#### — CAUTION —

- Make sure the compressor is plugged into an appropriate outlet and is properly grounded. *(See Grounding Instructions, Page 8.)*
- **Do not** operate the compressor at ambient temperatures above 35°C/95°F or below 0°C/32°F.
- The compressor is designed for maximum operation at 120 psig. Do not adjust the pressure switch at a higher pressure.

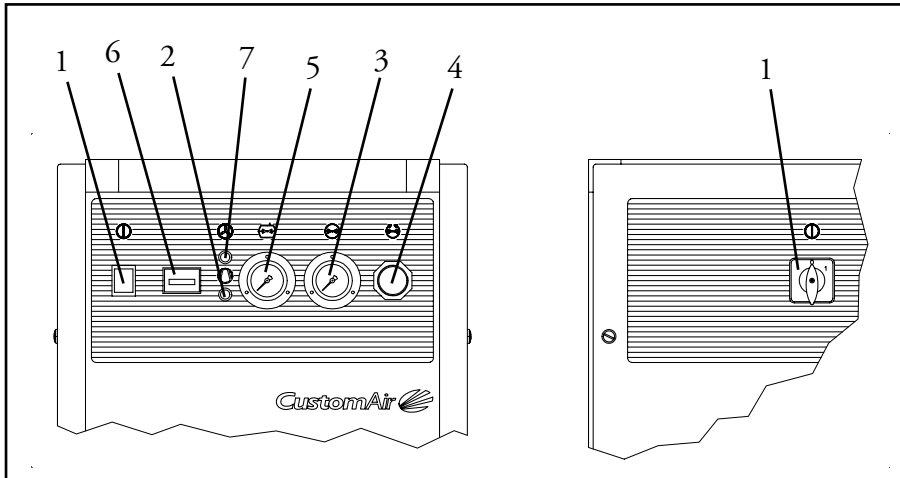
1. Turn the compressor **ON** by pressing the switch. *(For Models CA-925D, CA-927D and CA-929D, turn the switch to the right.)*

#### — NOTICE —

If the compressor does not turn on, see the Troubleshooting Chart on Pages 17.

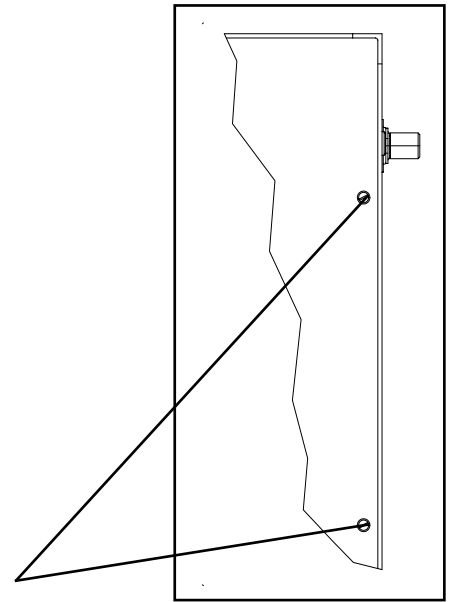
2. When the compressor is **ON**, the green light should also be **ON**.
3. Read the pressure on the outlet gauge.
4. Adjust the outlet pressure requested on the regulator, then read the pressure on the gauge (#3).
5. Read the pressure of the tank on the gauge.
6. Read and take note of the hours of operation on the hour meter.

7. When the fans are operating, the green light for “fans on” should be **ON**.
8. To turn the compressor **OFF**, press the switch (#1). *(For Models CA-925D, CA-927D and CA-929D, turn the switch to the left.)*
9. When the compressor is **OFF**, the green light should also be **OFF**.



### Cabinet Doors

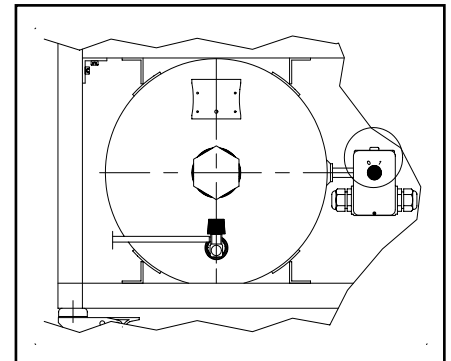
To open the cabinet doors, turn the two screws on the cabinet door counterclockwise using a flat head screwdriver.



### Pressure Switch

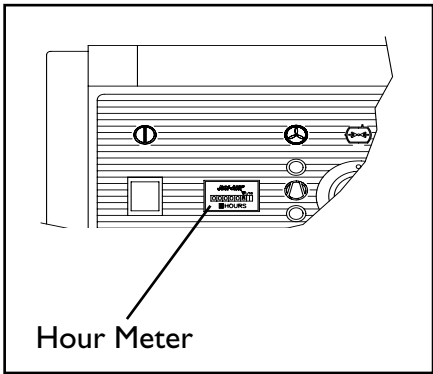
To turn on the pressure switch, do the following:

1. Turn the compressor **OFF**.
2. Turn the main switch.
3. Pull out the electrical plug.
4. Open the cabinet door on the side where the non-return valve is located. *(Refer to Cabinet Doors on this page.)*
5. Turn button to “1” *(normally factory preset).*
6. Close the cabinet door.



### — NOTICE —

If you need more information, contact DentalEZ  
Technical Service at 1-866-DTE-INFO.



Maintenance Schedule

An hour meter is installed on the compressor cabinet. After one month of operation, observe the number of hours the compressor has performed to determine the appropriate maintenance intervals for the activities listed in the chart below.

**IMPORTANT NOTE:** *In case of extreme operating conditions, e.g. dusty surroundings and/or high ambient temperature, the intervals indicated in the chart below are reduced.*

Activity	Interval
Clean compressor. (Pg. 12).....	100 hrs.
Inspect dryer (Pg. 13).....	1000 hrs.
Check for leaks. (Pg. 13) .....	1000 hrs.
Test safety valves. (Pg. 14) .....	1000 hrs.
Replace intake filter(s).* (Pg. 14).....	2000 hrs.
Replace dryer filter.** (Pg. 15).....	1000 hrs.
Clean non-return valve. (Pg. 15).....	Periodically
* In case the compressor is installed in a very dusty environment, the intake filter should be changed at least every 12 months regardless of the hours of operation.	
** If the environment is contaminated intervals for changing the dryer filter should be at least every 12 months regardless of the hours of operation.	

— NOTICE —

Maintenance kits are available. Contact DentalEZ Customer Service at 1-866-DTE-INFO.

Cleaning Compressor

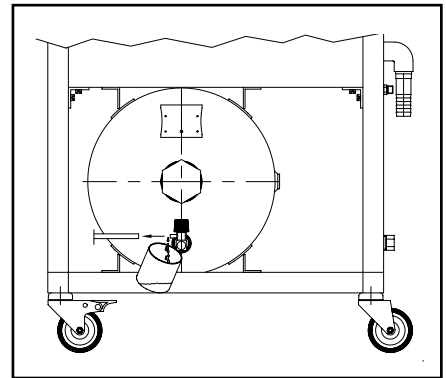
After approximately every 100 hours of operation, remove dust and any residue from the exterior of the compressor.

**IMPORTANT NOTE:** *DO NOT USE HARSH CHEMICALS.*

### Inspecting Dryer

Inspect the dryer every 1000 hours.

1. Operate the compressor until the pressure of the tank reaches at least 45 psig. Then read the pressure of the tank on the gauge.
2. Turn the compressor **OFF** at the main switch and pull out the electrical plug.
3. Open the cabinet door on the side where the drain cock is located on the tank.
4. Hold a cup under the drain cock, remove the tube from the drain cock and carefully open the cock.
5. If water leaks from the tank when the drain cock is open, the dryer is not working. See "Fault finding and repair" in the Dryer Manual or contact DentalEZ Technical Service at 1-866-DTE-INFO.
6. If the dryer works, fit the tube on the drain cock and close the cabinet door.



### Checking for Leaks

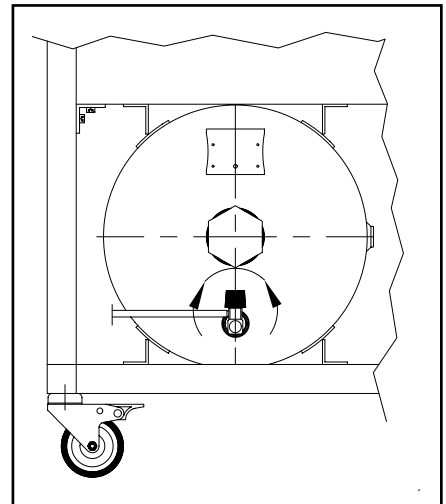
Check the compressor for leaks every 1000 hours.

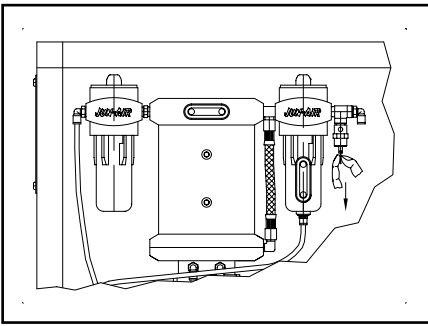
#### — IMPORTANT NOTE —

Always test the compressor when cold because the pumping time indicated refers to a cold compressor. Since the pumping time of a warm compressor is much longer, the result might be misleading.

Check the compressor for leaks every 1000 hours.

1. Turn the compressor **OFF** at the main switch and pull out the electrical plug.
2. Open the cabinet door on the side where the outlet cock is located on the tank.
3. Open the drain cock and let the pressure drop to 0 psig. Then read the pressure of the tank on the gauge.
4. Close the drain cock and disconnect air tools, if any.
5. Turn the compressor **ON** and measure the pumping time, i.e. how many seconds it takes until the pressure of the receiver reaches 120 psig. Then read the pressure of the tank on the gauge.
6. If the pumping time exceeds the seconds listed in Specifications, Page 2, turn the compressor **OFF**. Then locate and repair the leaks. (If the leaks cannot be repaired, contact DentalEZ Technical Service at 1-866-DTE-INFO.)
7. If the pumping time corresponds to the time in the specification chart on page 3, there are no leaks.
8. Close the cabinet door.





## Testing Safety Valves

Test the safety valve on the **dryer** and on the **tank** every 1000 hours.

1. Turn the compressor **ON**.

### — WARNING —

The compressor is still connected to the power supply.

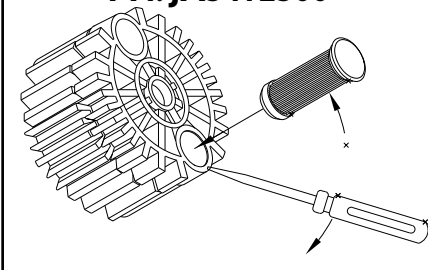
2. Open the cabinet door on the side where the safety valve is located.
3. Pull the safety valve ring. *A very loud burst should be heard when air leaks from the safety valve. If no air leaks out, the valve is defective and must be replaced immediately.*
4. If the safety valve works, close the cabinet door.

## Replacing Intake Filter

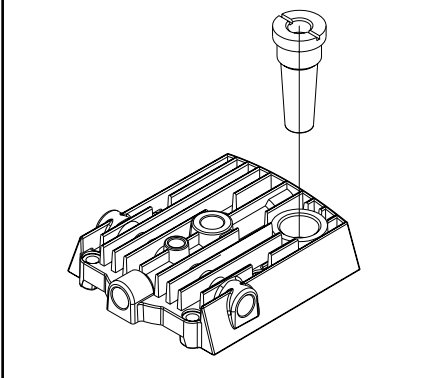
Replace the intake filter(s) every 2000 hours or once a year. Less if extreme operating conditions exist.

1. Turn the compressor **OFF** at the main switch and pull out the electrical plug.
2. Allow the compressor to cool.
3. Open the cabinet door on the side where the motor is located.
4. Using a flat-head screwdriver, tip up the rubber rim on the intake filter, then pull out the old intake filter from the cylinder.
5. Use PN: JA5412500 for the following models:
  - CA-925 has 2 intake filters
  - CA-925D has 2 intake filters
  - CA-927D has 3 intake filters
  - CA-929D has 4 intake filters
6. Using hands, gently press the new intake filter all the way down.
7. Close the cabinet door.
8. Use PN: JA5412400 for the following models:
  - CA-913D has 4 intake filters
  - CA-923D has 4 intake filters
  - a. On the cylinder head, unscrew the intake filter with a coin or similar.
  - b. Mount the new intake filter.

**PN: JA5412500**



**PN: JA5412400**





### Replacing Dryer Filter

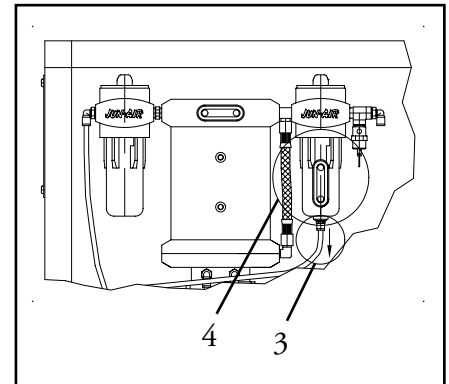
Replace the prefilter every 1000 hours or once a year. Less if environment is contaminated.

1. Turn the compressor **OFF** at the main switch and pull out the electrical plug.
2. Open the cabinet door on the side where the dryer is located.
3. Pull the black drain tube out of the rapid coupler underneath the prefilter.

**NOTE:** Models CA-925D, CA-927D and CA-929D are fitted with four black tubes on the distributor underneath the prefilter. Before dismounting, make note of how the tubes are fitted.

4. Using hands, unscrew the filter bowl.
5. Using hands, unscrew the old filter from the filter bowl.
6. Discard the old O-ring and place new O-ring in the filter bowl.
7. Using hands, screw the new filter on the filter bowl.
8. Using hands, screw on the filter bowl.
9. Fit the black drain tube to the rapid coupler on the prefilter.
10. Close the cabinet door.

**NOTE:** If more information is needed, refer to the enclosed Dryer Manual.



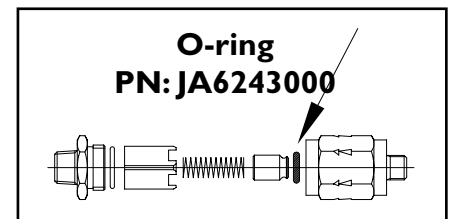
### Cleaning Non-return Valve

Clean the non-return valve periodically.

1. Turn the compressor **OFF** at the main switch and pull out the electrical plug.

**IMPORTANT NOTE:** Before dismounting the non-return valve, empty all air from the tank.

2. Dismount the non-return valve from the tank.
3. Disassemble the non-return valve and remove the old O-ring from the piston.
4. Clean the non-return valve.
5. Fit a new O-ring in the non-return valve and reassemble.



**Service Instruction**

The troubleshooting chart on the next page should be used when attempting to isolate operational problems.

If the problem is not addressed or cannot be isolated by performing the suggested procedures, contact your local DentalEZ full-service dealership. (*See Product Service Support, Page 28.*)

Have the following product information available:

- Model Name \_\_\_\_\_
- Model Number \_\_\_\_\_
- Serial Number \_\_\_\_\_
- Installation Date \_\_\_\_\_
- Hour Meter Reading \_\_\_\_\_
- Dealer \_\_\_\_\_

**NOTE:** *The model and serial number can be found on the tank and back of cabinet.*

**— CAUTION —**

- Always turn the power **OFF** before removing any parts from the compressor.
- Before dismantling any parts, always empty air from the air tank and ensure there is no pressure in the system.

## Troubleshooting Chart

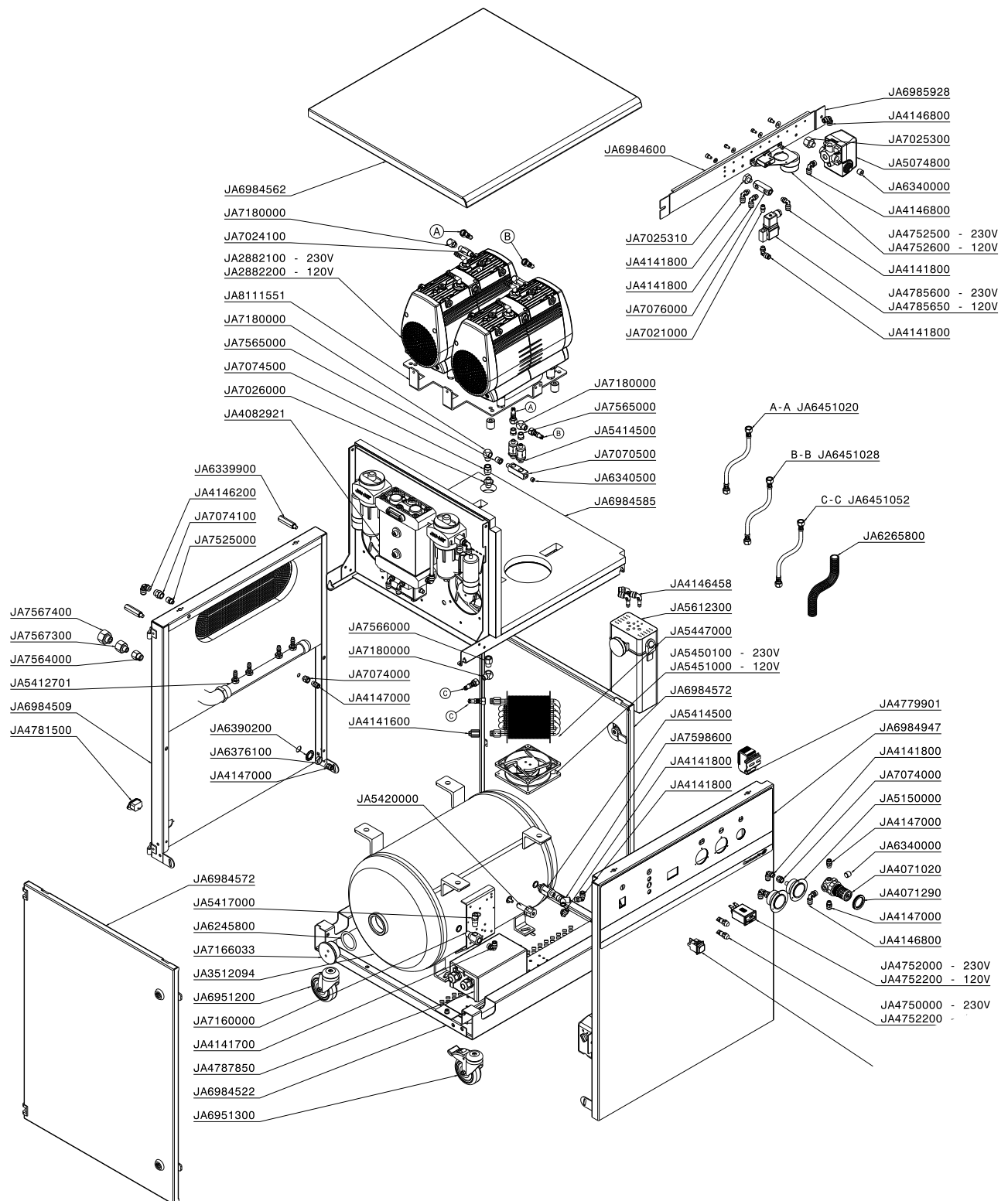
Symptom	Possible Cause(s)	Solution
Compressor does not start	No power from main supply	Check plug/cable.
		Check building's fuses.
	Button on pressure switch is on "0"	Turn pressure switch button to "I"
	Pressure in tank is too high. Compressor does not start until the pressure drops to the cut-in pressure on the pressure switch	Empty pressure tank.
Compressor starts but pressure does not increase	Intake filter clogged	Replace intake filter.
	Leaks in compressor or air lines	Check tubes, fittings and tools for leaks. <i>Use soapy water.</i>
	Clogged non-return valve	Clean non-return valve. Change O-ring.
	Desiccant is saturated or filter elements are clogged	See Dryer Manul (enclosed separately).
Compressor gets hot	Intake filter clogged	Replace intake filter.
	Ambient temperature exceeds 35°C/95°F	Make sure there is sufficient ventilation.
	Fans are not working	Check wiring. Then check fan for movement or blade rotation.
	Compressor is overloaded	Disconnect some of the air tools.
	Leaks in compressor	Check tubes, fittings and tools for leaks. <i>Use soapy water.</i>
Compressor operates even when no air is being used	Leaks in the compressor or leaks in the air line in the office	Check tubes, fittings and tools for leaks. <i>Use soapy water.</i>
Compressor starts and stops more frequently than usual	Condensate in tank	Dryer defective. See "Fault Finding and Repair" in the Dryer Manual (enclosed separately).
	Leaks in compressor or air lines	Check tubes, fittings and tools for leaks. <i>Use soapy water.</i>
Compressor does not switch on at 90 psig and does not switch off at 120 psig. <i>Read the gauge for pressure</i>	Pressure switch is defective	Replace pressure switch.

## Model CA-913D / CA-923D Parts List

2882200	Motor OF302 120V/60Hz
2882206	Motor OF302 230V/60Hz
4071020	Regulator R07-280-RNMG
4071290	Panel ring f/regulator and filter regulator
4082922	Dryer complete 2xOF302-40BD2
4141800	Rapid fitting elbow 1/8"xØ6
4146200	Rapid fitting elbow 1/4"xØ8 KQL08-02S
4146800	Rapid fitting Ø6mmx1/4" elbow
4147000	Rapid fitting 1/8" ext. x Ø6mm
4750000	Control lamp 230V
4750200	Control lamp 120V
4752000	Hour meter 230V
4752200	Hour meter 120V
4752500	Camtimer 230V compl. f/plastic cabinets
4752600	Camtimer 120V complete f/plastic cabinets
4783800	Switch f/metal cabinet (green)
4785600	Solenoid valve f/unloader 230V w/plug
4785650	Solenoid valve f/unloader 120V w/plug
4787850	Low voltage relay
5150000	Gauge Ø40 0-16 bar 1/8" built-in
5412701	Intake pipe f/2xOF302
5414500	Non return valve
5417000	Safety valve 9 bar / 135 psi
5420000	Drain cock 1/4" 25l
6254500	Vibration damper Ø25x25 mm
6293101	Nut M20x1.5 brass
6294601	Nipple M20 UL/CSA
6339900	Distance bolt f/metal cabinet
6340000	Unbraco plug 1/4"x12
6340500	Unbraco plug 1/8"
6350200	Washer Ø26x8.5x4 mm FZB
6376100	Nut 3/8" flat
6985067	Mounting bracket size 3 f/cabinet
7021000	Double nipple 3/8" UNEF - 32
7024100	Double nipple 1/4" L= 43 mm
7025300	Bushing f/metal cabinet 1/4"
7025310	Bushing f/autodrain f/metal cabinet 1/8"
7070500	Connection piece f/non-return valve model 12
7074000	Coupling 1/8"
7074500	Coupling 1/4"
7076000	Adaptor 4-way
7082000	Adaptor
7180000	Elbow 1/4" int./ext. KRG

7201005	Hose tail plastic Ø8 x 1/4" elbow
7525000	Hose tail f/coupling nut 1/4"
7564000	Bushing f/cabinet outlet
7565000	Bushing 1/4" ext. x 1/8" int.
7598600	Y-connection 1/8" (3 x int.)
8111551	Motor foundation f/2xOF302-40, painted

## Model CA-913D / CA-923D Diagram

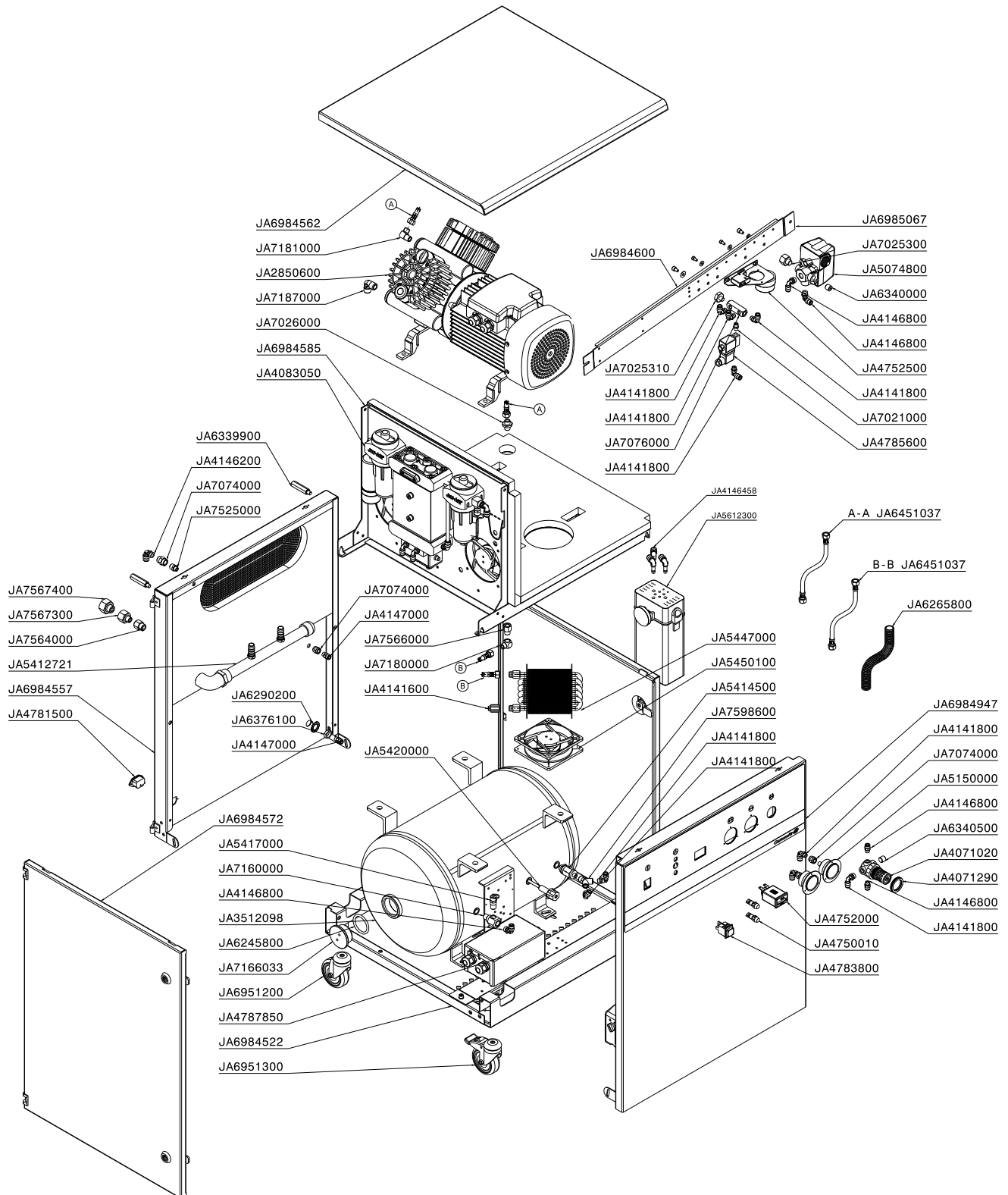


## Model CA-925 Parts List

2850600	Receiver 25l w/inspection plug, internally coated, RAL 9002, ASME
4071020	Regulator R07-280-RNMG
4071290	Panel ring f/regulator and filter regulator
4083050	Dryer f/2000 motors size 2 f/metal cabinet
4141600	Rapid fitting 1/4" internal 6mm hose
4141800	Rapid fitting elbow 1/8"xØ6
4146200	Rapid fitting elbow 1/4"xØ8 KQL08-02S
4146800	Rapid fitting Ø6mmx1/4" elbow
4147000	Rapid fitting 1/8" ext. x Ø6mm
4750000	Control lamp 230V
4752000	Hour meter 230V
4752500	Camtimer 230V compl. f/plastic cabinets
4783800	Switch f/metal cabinet (green)
4785600	Solenoid valve f/unloader 230V w/plug
4787850	Low voltage relay
5150000	Gauge Ø40 0-16 bar 1/8" built-in
5240010	Capacitor, run complete 40uF/450V AC f/2000 (60 cm)
5412721	Intake pipe f/2000 M(D2)
5414500	Non return valve
5417000	Safety valve 9 bar / 135 psi
5422500	Drain cock 1/4" no tube
5447000	Radiator f/radiator & fan box
5451000	Fan 230V 120x120
6293101	Nut M20x1.5 brass
6294601	Nipple M20 UL/CSA
6340000	Unbraco plug 1/4"x12
6340500	Unbraco plug 1/8"
6350200	Washer Ø26x8.5x4 mm FZB
6376100	Nut 3/8" flat
6985067	Mounting bracket size 3 f/cabinet
7021000	Double nipple 3/8" UNEF - 32
7025300	Bushing f/metal cabinet 1/4"
7025310	Bushing f/autodrain f/metal cabinet 1/8"
7026000	Bushing nipple
7074000	Coupling 1/8"
7076000	Adaptor 4-way
7082000	Adaptor
7180000	Elbow 1/4" int./ext. KRG
7181000	Elbow 1/4" ext./ext.
7187000	Elbow 3/8"
7525000	Hose tail f/coupling nut 1/4"
7564000	Bushing f/cabinet outlet

7566000	Bushing 1/4" x 1/4"
7598600	Y-connection 1/8" (3 x int.)

## Model CA-925 Diagram



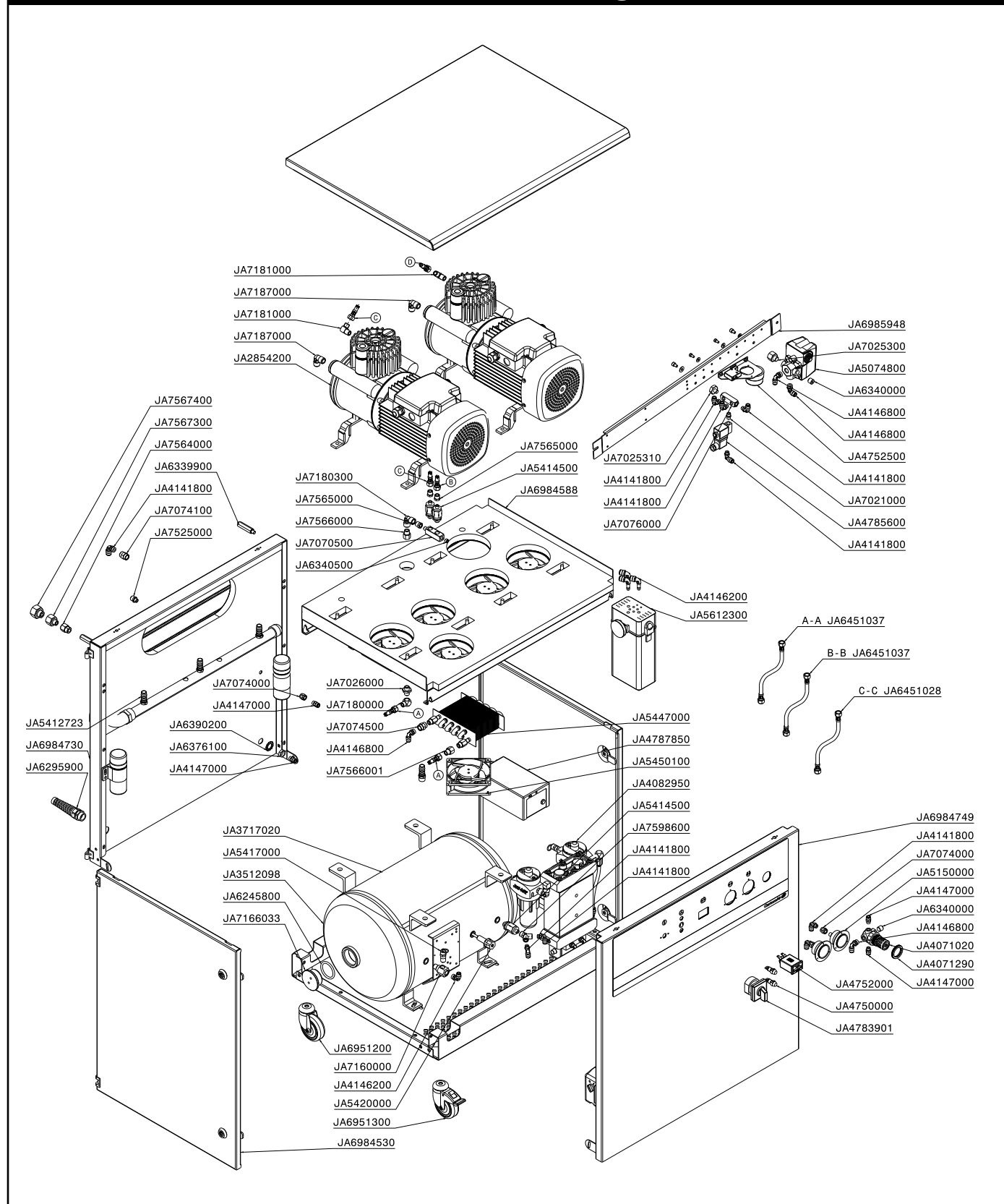
## Model CA-925D Parts List

2854200	Motor 1000 B(D)/M(D) 230V/50-60Hz
4071020	Regulator R07-280-RNMG
4071290	Panel ring f/regulator and filter regulator
4082950	Dryer f/1000-40MD2 size 2
4141700	Rapid fitting 1/4" external x Ø6
4141800	Rapid fitting elbow 1/8"xØ6
4146800	Rapid fitting Ø6mmx1/4" elbow
4147000	Rapid fitting 1/8" ext. x Ø6mm
4750010	Control lamp 230V
4752000	Hour meter 230V
4783901	Switch f/metal cabinet (20A)
5150000	Gauge Ø40 0-16 bar 1/8" built-in
5240010	Capacitor, run complete 40uF/450V AC f/2000 (60 cm)
5412723	Intake pipe f/2x1000 M(D2)
5414500	Non return valve
5416100	Safety valve 12 bar / 177 psi
5422500	Drain cock 1/4" no tube
5447000	Radiator f/radiator & fan box
5451000	Fan 230V 120x120
6254500	Vibration damper Ø25x25 mm
6293100	Nut PG16 brass
6294600	PG-Nipple M16 UL/CSA
6295900	Cable relief PG16
6339900	Distance bolt f/metal cabinet
6340000	Unbraco plug 1/4"x12
6376100	Nut 3/8" flat
6985067	Mounting bracket size 3 f/cabinet
7025000	Double nipple 1/4"x1/8"
7025300	Bushing f/metal cabinet 1/4"
7025310	Bushing f/autodrain f/metal cabinet 1/8"
7026000	Bushing nipple
7070500	Connection piece f/non-return valve model 12
7074000	Coupling 1/8"
7074500	Coupling 1/4"
7076000	Adaptor 4-way
7082000	Adaptor
7180000	Elbow 1/4" int./ext. KRG
7180300	Elbow 1/4" int./int.
7181000	Elbow 1/4" ext./ext.
7187000	Elbow 3/8"
7190000	Elbow 1/8"
7525000	Hose tail f/coupling nut 1/4"
7564000	Bushing f/cabinet outlet

7565000	Bushing 1/4" ext. x 1/8" int.
7566000	Bushing 1/4" x 1/4"
7598600	Y-connection 1/8" (3 x int.)



## Model CA-925D Diagram

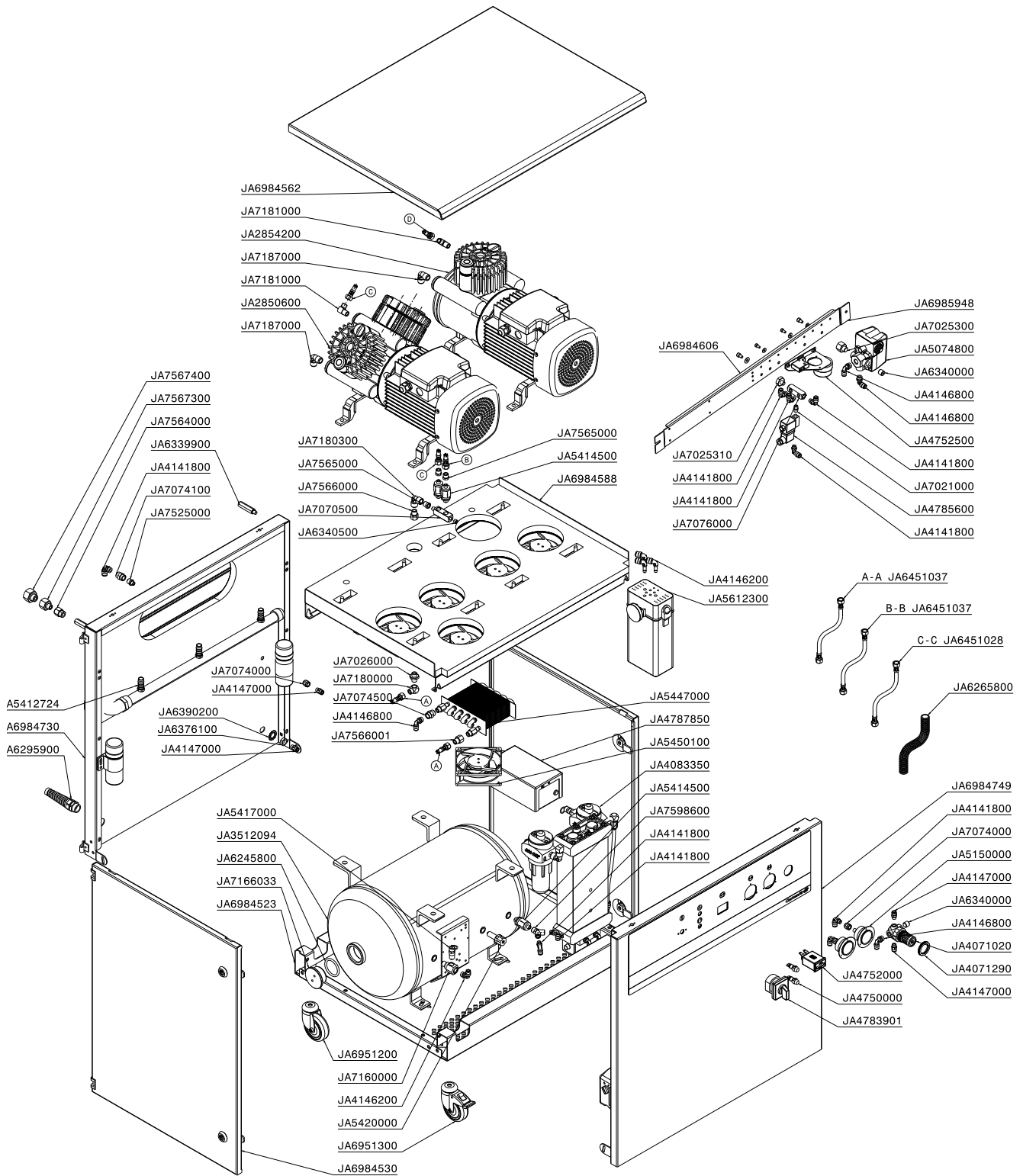


## Model CA-927D Parts List

2850600	Motor 2000 B(M(D) 230V UL
2854200	Motor 1000 B(D)/M(D) 230V/50-60Hz
4071020	Regulator R07-280-RNMG
4071290	Panel ring f/regulator and filter regulator
4083280	Dryer f/3000 motors size 3 f/metal cabinet
4141700	Rapid fitting 1/4" external x Ø6
4141800	Rapid fitting elbow 1/8"xØ6
4146800	Rapid fitting Ø6mmx1/4" elbow
4147000	Rapid fitting 1/8" ext. x Ø6mm
4750010	Control lamp 230V
4752000	Hour meter 230V
4783901	Switch f/metal cabinet (20A)
5150000	Gauge Ø40 0-16 bar 1/8" built-in
5240010	Capacitor, run complete 40uF/450V AC f/2000 (60 cm)
5412724	Intake pipe f/3000 M(D3)
5414500	Non return valve
5416100	Safety valve 12 bar / 177 psi
5422500	Drain cock 1/4" no tube
5447000	Radiator f/radiator & fan box
5451000	Fan 230V 120x120
6254500	Vibration damper Ø25x25 mm
6293100	Nut PG16 brass
6294600	PG-Nipple M16 UL/CSA
6295900	Cable relief PG16
6339900	Distance bolt f/metal cabinet
6340000	Unbraco plug 1/4"x12
6376100	Nut 3/8" flat
6985067	Mounting bracket size 3 f/cabinet
7025000	Double nipple 1/4"x1/8"
7025300	Bushing f/metal cabinet 1/4"
7025310	Bushing f/autodrain f/metal cabinet 1/8"
7026000	Bushing nipple
7070500	Connection piece f/non-return valve model 12
7074000	Coupling 1/8"
7074500	Coupling 1/4"
7076000	Adaptor 4-way
7082000	Adaptor
7180000	Elbow 1/4" int./ext. KRG
7180300	Elbow 1/4" int./int.
7181000	Elbow 1/4" ext./ext.
7187000	Elbow 3/8"
7190000	Elbow 1/8"
7525000	Hose tail f/coupling nut 1/4"

7564000	Bushing f/cabinet outlet
7565000	Bushing 1/4" ext. x 1/8" int.
7566000	Bushing 1/4" x 1/4"
7598600	Y-connection 1/8" (3 x int.)

## Model CA-927D Diagram

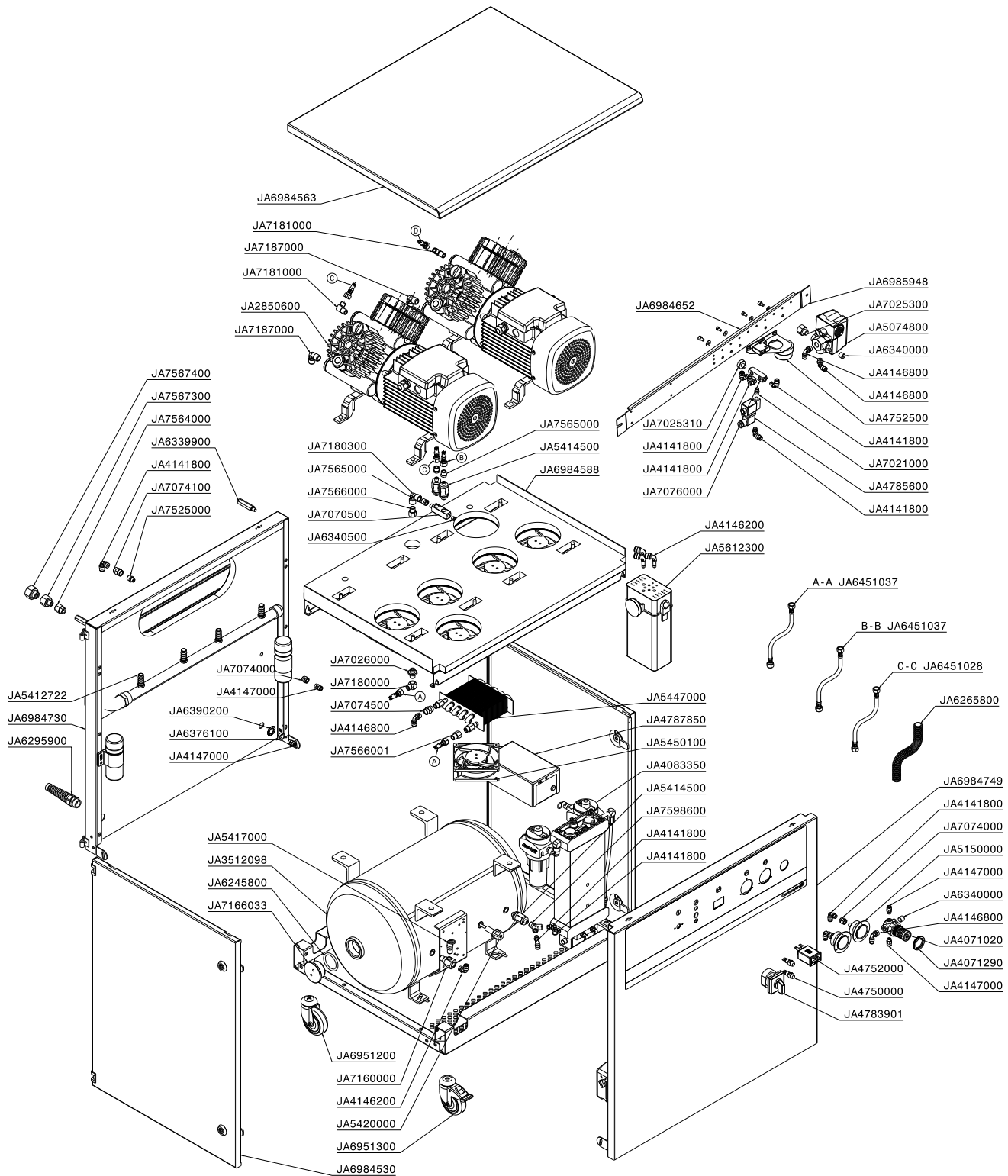


## Model CA-929D Parts List

2850600	Motor 2000 B/M(D) 230V UL
4071020	Regulator R07-280-RNMG
4071290	Panel ring f/regulator and filter regulator
4083350	Dryer f/4000-40MD3 size 3
4141700	Rapid fitting 1/4" external x Ø6
4141800	Rapid fitting elbow 1/8"xØ6
4146800	Rapid fitting Ø6mmx1/4" elbow
4147000	Rapid fitting 1/8" ext. x Ø6mm
4750010	Control lamp 230V
4752000	Hour meter 230V
4783901	Switch f/metal cabinet (20A)
5150000	Gauge Ø40 0-16 bar 1/8" built-in
5240010	Capacitor, run complete 40uF/450V AC f/2000 (60 cm)
5412722	Intake pipe f/4000 M(D3)
5414500	Non return valve
5416100	Safety valve 12 bar / 177 psi
5422500	Drain cock 1/4" no tube
5447000	Radiator f/radiator & fan box
5451000	Fan 230V 120x120
6254500	Vibration damper Ø25x25 mm
6293100	Nut PG16 brass
6294600	PG-Nipple M16 UL/CSA
6295900	Cable relief PG16
6339900	Distance bolt f/metal cabinet
6340000	Unbraco plug 1/4"x12
6376100	Nut 3/8" flat
6985067	Mounting bracket size 3 f/cabinet
7025000	Double nipple 1/4"x1/8"
7025300	Bushing f/metal cabinet 1/4"
7025310	Bushing f/autodrain f/metal cabinet 1/8"
7026000	Bushing nipple
7070500	Connection piece f/non-return valve model 12
7074000	Coupling 1/8"
7074500	Coupling 1/4"
7076000	Adaptor 4-way
7082000	Adaptor
7180000	Elbow 1/4" int./ext. KRG
7180300	Elbow 1/4" int./int.
7181000	Elbow 1/4" ext./ext.
7187000	Elbow 3/8"
7190000	Elbow 1/8"
7525000	Hose tail f/coupling nut 1/4"
7564000	Bushing f/cabinet outlet

7565000	Bushing 1/4" ext. x 1/8" int.
7566000	Bushing 1/4" x 1/4"
7598600	Y-connection 1/8" (3 x int.)

## Model CA-929D Diagram



The DentalEZ Group and its employees are proud of the products we provide to the dental community. We stand behind these products with a warranty against defects in material and workmanship as provided below and have our own in-house repair facility to service our products.

In the event that you experience difficulty with the application or operation of any of our products, please contact our customer service department at our expense at (866)DTE-INFO.

If we cannot resolve the issue by telephone, we will arrange for a representative to contact you or suggest that the product be returned to our factory for inspection.

If product return or repair is required, we will provide you with a **Return Authorization** number and shipping instructions to return the product to the proper facility. If the product is under warranty we will ask you to provide proof of purchase such as a copy of your invoice. Please be sure to include the **Return Authorization** number on the package you are returning. **Products returned without a return authorization number cannot be repaired.**

Freight costs for product returns are the responsibility of the customer. Products under warranty will be repaired or replaced, at our sole discretion, and returned at our expense. Products outside the warranty limits will be repaired and returned with costs invoiced to the customer. We are not responsible for shipping damages. We will, however, help you file a claim with the freight carrier. Written repair estimates are available.

DentalEZ warrants all equipment and parts to be free of defects in material and workmanship, under normal usage, under the following terms:

**CustomAir Products:**

CustomAir 900 Series Compressors

**Warranty Period:**

5 Years from date of installation\*.

Please note the following additional terms of our warranty and return policy:

- Warranties cover manufacturing defects only and do not cover defects resulting from abuse, improper handling, cleaning, care or maintenance, normal wear and tear or non-observance of operating, maintenance or installation instructions. **Failure to use authorized parts or an authorized repair facility voids this warranty.**
- **Liability is limited to repair or replacement of the defective product at our sole discretion. All other liabilities, in particular liability for damages, including, without limitation, consequential or incidental damages are excluded.**
- THIS WARRANTY IS IN LIEU OF ALL OTHER WARRANTIES, EXPRESSED OR IMPLIED, INCLUDING ANY IMPLIED WARRANTIES OF MERCHANTABILITY OR FITNESS FOR A PARTICULAR PURPOSE. NO EMPLOYEE, REPRESENTATIVE OR DEALER IS AUTHORIZED TO CHANGE THIS WARRANTY IN ANY WAY OR TO GRANT ANY OTHER WARRANTY.

**WARRANTY REPAIRS:**

Parts repaired or replaced on a product that is in warranty will be warranted for the duration of that product's original warranty.

**NON-WARRANTY REPAIRS:**

The warranty on parts either repaired or replaced on an out-of-warranty product will cover the repaired part only and will be for the timeframe of a new parts warranty period.

**PRODUCT RETURN:**

Opened products or product returns more than a year old cannot be returned for credit. There will be a 15% (\$25.00 minimum) restocking charge on all items authorized for return.

\*Provided conditions defined in instruction manual are met.

CustomAir and DentalEZ are registered trademarks of DentalEZ, Inc.

© 2003 DentalEZ Alabama, Inc.





CustomAir®

2500 Highway 31 South  
Bay Minette, Alabama 36507  
Phone: 1-(866) DTE-INFO  
Fax: (251) 937-0461  
[www.dentalez.com](http://www.dentalez.com)